



Shenley Primary School
Spring 1 Curriculum Information Page 2025 - 2026



In **English**, we will be writing a range of pieces including:

Finishing our narrative writing from last half term plus:-

Information text
Newspaper reports / Memoirs
Persuasion text – travel leaflets

Books we will study are:-
Coming to England
Real life Mysteries
Step into my Shoes

In **maths**, we will be learning about:

*Length and perimeter – kilometres and metres; perimeter of rectilinear shapes; perimeter of polygons

*Multiplication and division including factors

*Multiplying by 10 and 100

We will also practise multiplication tables regularly.

In **science**, our topic is States of Matter

As scientists, we will:-

*identify solids, liquids, and gases

*observe their properties

*understand changes of state (melting, freezing, evaporating, condensing), and linking these to the water cycle, using scientific vocabulary and methods like fair testing.

*compare materials, setting up simple enquiries, taking measurements (e.g., temperature), and recording findings to explain how heating and cooling cause changes.

In **guided reading** sessions, we will be working on our inference skills. We will look at a variety of different texts to support us in developing these skills.

Reading books will be changed as and when needed.
Please see Mrs Hall if you have any issues with this.

In **PSHE**, our topic will be Dreams and Goals.

We will learn about working as part of a team, staying motivated when something is challenging, helping others to fulfil their goals, and having a positive attitude.

In **RE**, our topic is:

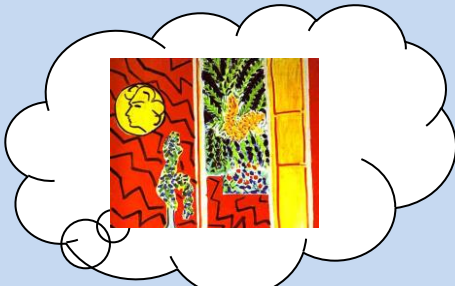
‘Just how important are our beliefs?’

Here are some examples of the content of learning:-

To understand the cultural and religious importance of commitment ceremonies, such as baby blessings.

To explain what items, or garments may signify or symbolise about an individual’s commitments or beliefs.

To explain some reasons why people might demonstrate their commitment to beliefs through their diet.



In **Art** our topic is:

Painting with colour
We will be studying the artist Matisse, and eventually design, draw and paint a Matisse inspired piece of work.

We will develop a wide range of art and design techniques in using colour, pattern, texture, line, shape, form and space.

In **PE**, we will have dance and basketball.

The skills we are developing are:

*building on basics

*linking movements fluently

*using dynamics (speed, levels, force) to show mood

*performing with growing control and expression

*working with partners or groups to create routines with clear beginnings, middles and ends.



Shenley Primary School
Spring 1 Curriculum Information Page 2025 - 2026



In **computing**, our project is: Animation

We will learn how to understand animation frames and make a simple animation using a programme called 2 Animate on Purple Mash.

In **French**, we will be learning about clothing including: learning the masculine and feminine for 'the' and a / an, and how plural nouns change these. We will learn the noun and adjective agreement with feminine and masculine nouns and plurals. We will be fashion designers and learn the names of some clothing in French (spelling and pronunciation).

In **music**, our topic is: Body and tuned percussion

We will learn how to keep in time with music, how to organise beats in a bar, and compose and perform body percussion pieces.

General information

School doors open at 8.45am and school finishes at 3.15pm.

Please provide your child with a water bottle (clearly named) and a healthy snack for morning break (no nut products or chocolate/crisps).

Children must wear correct uniform to school which can be found here: https://www.shenleyprimary.co.uk/_site/data/files/migrated/school-uniform/school-uniform-2024-25-website.pdf

PE is on now on Tuesday afternoons and Friday mornings – please leave the PE kit in school for the half term. The dance teacher has specified that it is important to be in flexible, loose clothing, such as joggers for dance and trainers are a must. Without them, the children will not be able to participate in the lesson. We appreciate your understanding on this.

The link to see what lunch is available each day is <https://www.shenleyprimary.co.uk/pupils-choice-menu>

Parent Consultations are: -

Wednesday 11th March (3.40pm - 6.30pm)

Thursday 12th March (3.40pm - 6.00pm)

Our class assembly this year is on Thursday 19th March at 9.05am - we hope to see you there!

Homework

Homework is set on Friday and now due in the following Wednesday (Thursday latest to give me time to mark it.)

Please encourage and support your child to complete the homework activities including times table practice. Children should read for at least 20 minutes each day and sign their own reading journal if you are unable. Thank you for your continued support.

Websites

PLEASE USE: -Times Tables Rock Stars: <https://trockstars.com/> and [timestables.co.uk](https://www.timestables.co.uk)

BBC Bitesize: <https://www.bbc.co.uk/bitesize/primary>